

Upper San Gabriel River Steering Committee Meeting

Greater Los Angeles County Integrated Regional Water Management Plan (IRWMP)

April 26, 2007



**MALCOLM
PIRNIE**

Agenda

- **Introductions**
- **Update from Leadership Committee Meeting**
- **Prop 50 Round 2 Update**
- **Review of Leadership Committee Decision-Making Structure**
- **Prioritization Criteria Discussion**
- **Overview of May USGR&RH Project Workshops**
- **Future Agenda Items/Other Items**
- **Schedule**

Update from Leadership Committee Meeting

Prop 50 Round 2 Update

- **Prop 50 Round 2 Revised Draft Guidelines and PSP were released last week**
- **Propose to cap IRWM Implementation grants at \$25M and to count Round 1 Implementation grant awards towards this cap**
- **Unless this is changed, LA Region will not be eligible to apply for Round 2 funds**

Review of Leadership Committee Decision-Making Structure

Background

- **Successful first year**
 - Adoption of regional plan & targets
 - Receipt of \$25M in state funding
 - Remarkable dialogue initiated
- **Moving into implementation**
 - Need for coordination on grants
 - Need for process to allocate \$
 - Need to monitor progress
 - Need to continue dialogue & engage ALL stakeholders
- **LC/SCs – need to revisit decision-making**
 - Consultant team tasked to examine & provide observations

Synopsis of Approach

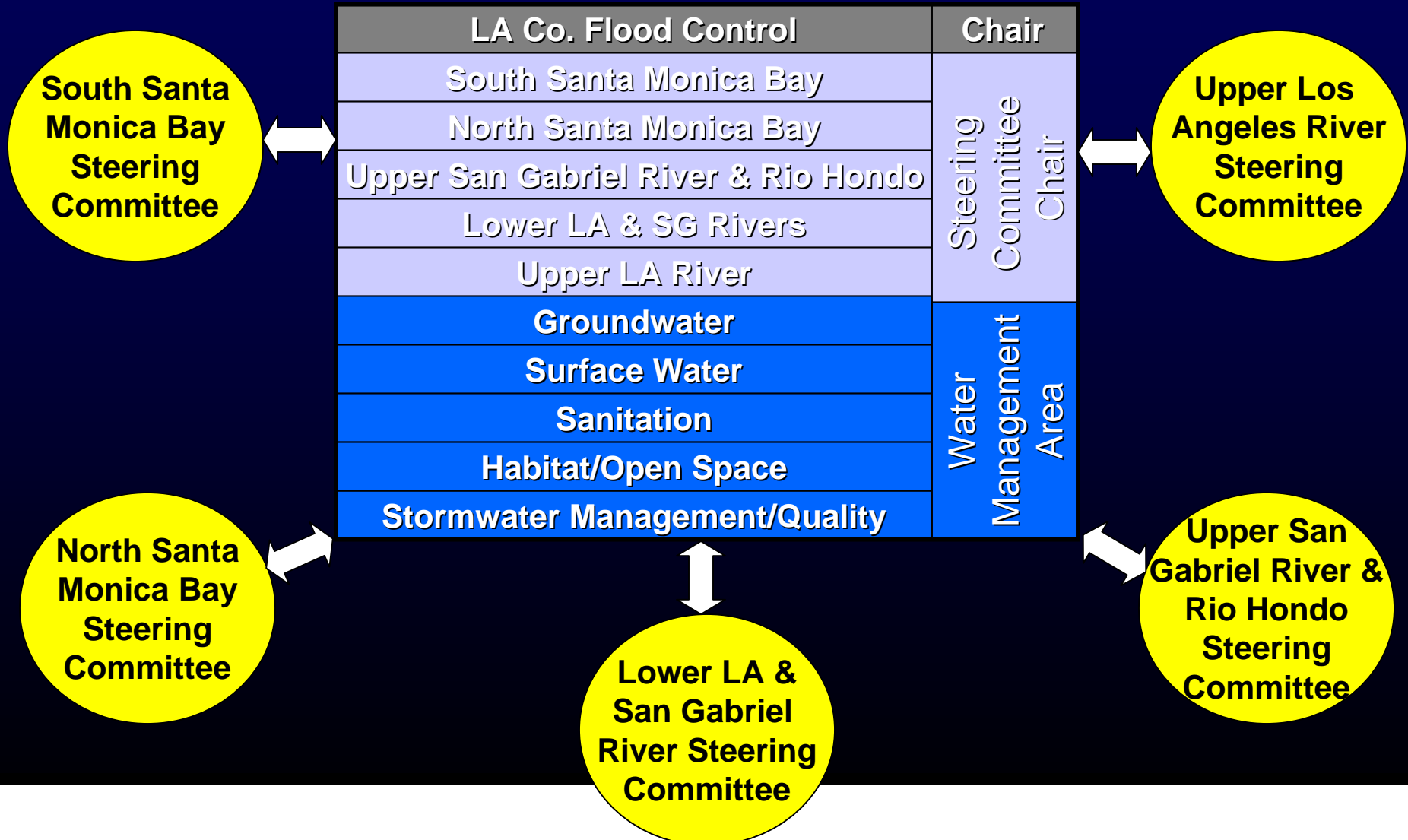
- **Telephone interviews w/ LC members**
- **Discussions w/ SCs**
- **Review of other decision-making structures**
- **Observations on long-term decision-making**

Current Structure

- **LC makes formal decisions regarding scope and content of the plan**
 - Two representatives per sub-region
 - Chair: LA Co. Flood Control
- **Five sub-regional SCs provide input to LC on major issues contained in plan**
 - Executive level reps from agencies and organizations involved in local water management
 - No specific guidelines for selection; each has different composition

Current Structure

LEADERSHIP COMMITTEE



Regional Water Management Group

- **Per IRWM Grant Program Guidelines, a Regional Water Management Group had to be established to obtain Prop 50 funds**
 - **3 or more public agencies, at least 2 of which had statutory authority over water management**
 - **Established by means of a JPA, MOU, or other written agreement**
 - **Purpose: IRWMP Prep, adoption, & implementation**
- **For plan adoption, MOU formed RWMG**
 - **Signatories constitute RWMG**

Regional Water Management Group

- **MOU - purpose of RWMG:**
 - **Coordinate & share water resources info for Prop 50 grant funding & implementation**
 - **Coordinate & collaborate to develop individual or joint projects, including but not limited to an IRWMP & solicitation of external funding for IRWMP implementation**
- **MOU does not specify decision-making structure for RWMG**
- **LC currently serves as RWMG & is responsible for plan development & implementation (per Interim Operating Guidelines)**

Summary of Feedback

1. Representation

- LC/SC roles
- LC structure
- SC structure

2. Transparency

- Stakeholder communication
- LC meeting structure

3. Funding

- Administrative & technical support

Potential LC Roles & Responsibilities:

- Prepare & maintain “modified MOU”?
- Provide regional LA IRWMP oversight?
- Track regional progress on LA IRWMP targets?
- Act as liaison between State & SCs?
- Represent the region’s needs to the State?
- Provide a balance for sub-regional interests?
- Find, coordinate & pursue funding opportunities?
- Divide regional grant funding equitably?
- Provide regional LA IRMWP outreach?
- Periodically update the LA IRWMP?

Leadership Committee Structure

- **Some said current LC structure is unnecessarily exclusive**
- **Others said an expanded LC is unwieldy**
- **Some said SC members should select water management area reps**
- **Most agreed terms would be beneficial**
 - **Most reject term limits**
- **Some indicated broader representation is needed**
 - **Non-Profits**
 - **Cities**

Leadership Committee Structure

- **Most were satisfied with County as Chair**
- **Some suggested hiring outside facilitator**

**Consider: Increasing to 3 reps appointed by each
SC & County Chair = 16 member LC**

Leadership Committee Structure



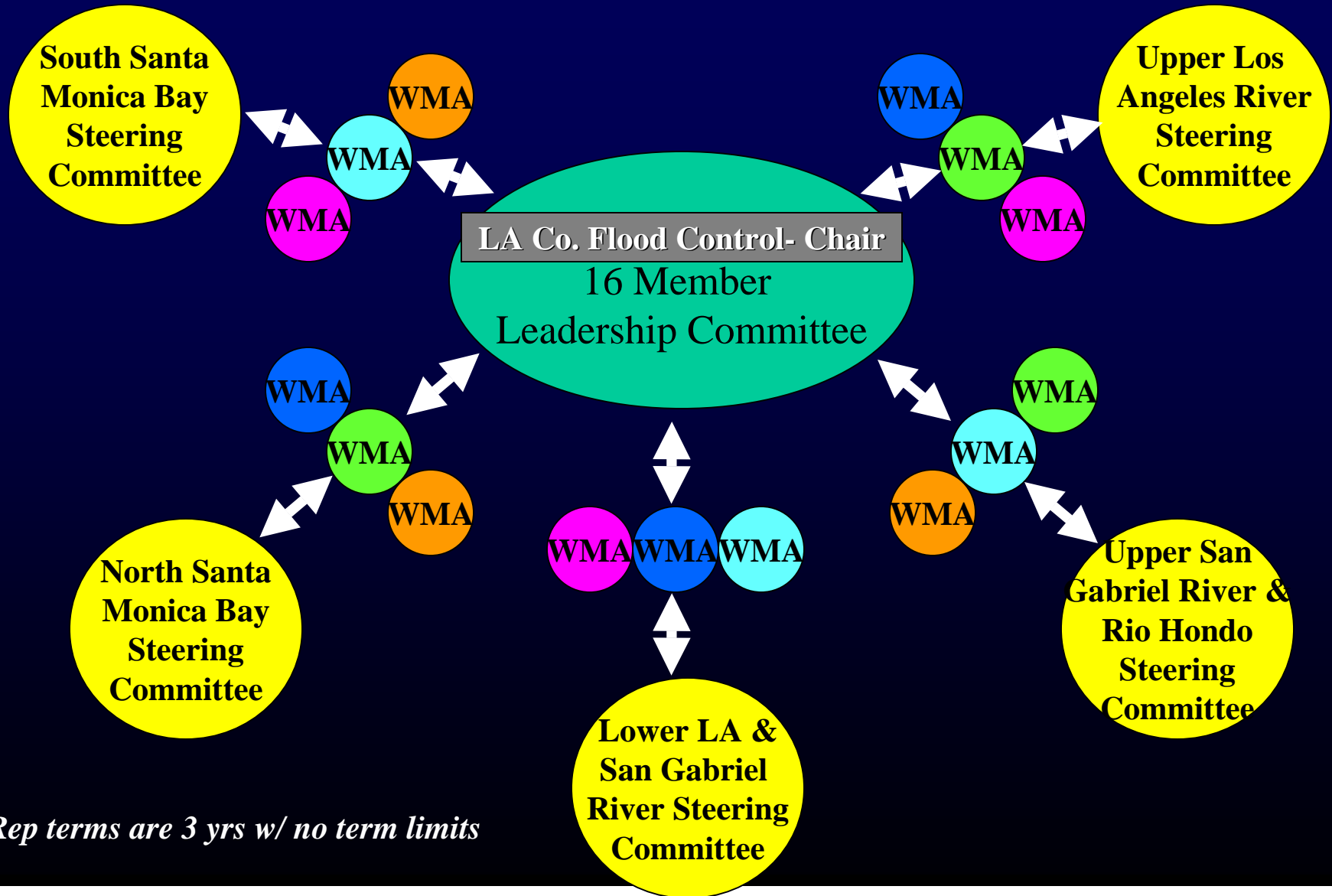
Leadership Committee Comments

- Many LC members at the 4/5/07 meeting expressed concern with the three reps/SC suggestion regarding insufficient Water Management Area (WMA) representation

To Address This Consider:

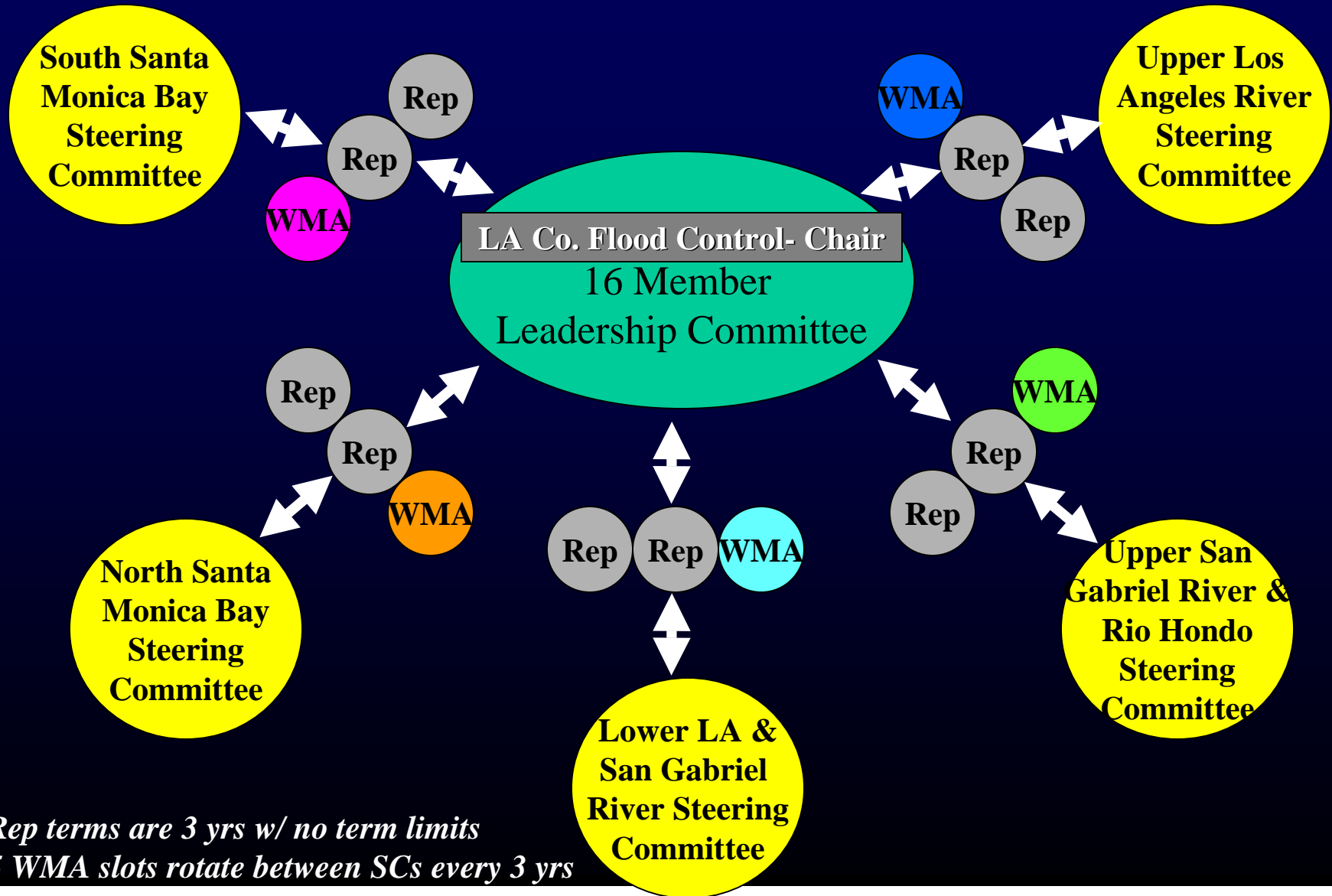
1. Requiring that each of the LC reps per SC represent a different WMA
- or
2. Giving each SC the responsibility to appoint a rep for one WMA; rotate the WMA slots between sub-regions on the same term as the LC appointees (suggest every 3 yrs)

LC Structure: Option 1

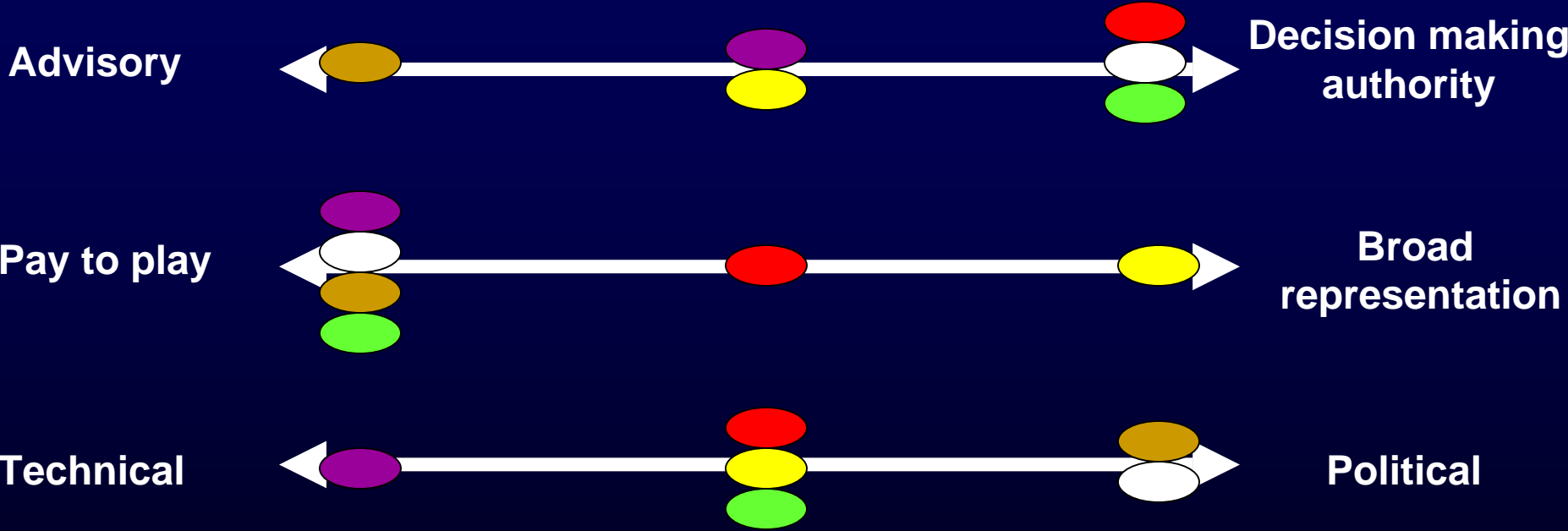








Rep terms are 3 yrs w/ no term limits

LC Structure: Option 2



Other LC Structures: Defining Features



-  South Orange County IRWMP
-  North Coast IRWMP
-  Bay Area IRWMP
-  California Urban Water Conservation Council
-  Santa Monica Bay Restoration Commission
-  Santa Ana Watershed Project Authority

Potential SC Roles & Responsibilities:

- **Represent sub-regional interests?**
- **Provide outreach to ensure input from stakeholders?**
- **Maintain sub-regional prioritized project list?**
- **Allocate grant funding for project implementation?**
- **Maintain list of sub-regional goals & priorities?**
- **Develop, as appropriate, sub-regional goals & targets (this varied by sub-region)?**
- **Track sub-regional goal, target & planning progress?**
- **ID & sponsor sub-regional planning studies?**
- **Work with LC to update the Plan as needed?**

Steering Committee Structure

- **Most said more decision-making should occur at SC level**
- **Discussions on representation varied between sub-region**
 - **Some indicated that more non-profit reps needed**
 - **Others indicated more city reps needed**
 - **Others said representation was good as is**

Transparency

- **Need for more formal meeting structure**
 - Advance meeting agenda & posted/distributed minutes
 - Sync SCs timing to discuss LC agendas.
 - Rearrange LC seating
 - Key LC action items submitted in simple letter format
 - Take public comment at LC meeting
- **Need to formalize LC & SC roles**
- **Decisions on project prioritization & readiness should be made by a group that does not include proponents of any projects on the list.**

Funding

- **Many noted a need to arrange for mid-term/long-term equitable funding system**
- **Need for ongoing staff support**
 - **Hiring of dedicated staff**
 - **Use of agency staff**
 - **Use of consultants**

Key Areas for Discussion

- **What should the specific roles of the LC & SC be for plan implementation?**
- **Increase LC size for greater stakeholder engagement?**
- **How should mid-term/long-term funding & staff support be obtained?**

Areas for Discussion

- **RWMG was developed per requirements for Prop 50 – future IRWMP funding opportunities have since come to exist. What should the role of the group be in seeking future funding?**
- **Does the current structure sufficiently provide for participation from all stakeholders who have indicated a desire to collaborate in the planning process (by signing the MOU)?**

Next Steps

- **April - Collect verbal & written input from SCs & others (e.g. Watershed Council)**
- **May* - LC considers action on the memo via a formal “action item” identifying specific recommendations, &, where appropriate, providing language regarding changes to the MOU &/or operating guidelines.**

*** Consulting team is not scoped to support a June meeting of the LC, and thus hope to conclude the governance issue in May.)**

The End

Other Structures

IRWMP Regions

- **South Orange County IRWMP**
- **North Coast IRWMP**
- **Bay Area IRWMP**

Other Organizations

- **California Urban Water Conservation Council**
- **Santa Monica Bay Restoration Commission**
- **Santa Ana Watershed Project Authority**

South Orange County IRWMP

- **For implementation, Executive Committee of elected officials will serve as decision-making body**
 - **Consensus-building forum**
 - **Decisions taken to individual boards for approval**
- **Participation in cost-share required for EC membership**
- **Management Committee makes minor amendments to IRWMP & project list**
 - **1 rep from each agency**
- **County serves as Chair & provides staff support**

North Coast IRWMP

- **Policy Review Panel provides oversight & direction**
 - **Consists of 2 reps (elected level) from each county, appointed by county's Board of Sups**
- **Technical Peer Review Committee provides tech support for PRP**
 - **2 reps from each county (agency staff, NGO staff, consultants, etc.) appointed by County BOS**
- **Project Team handles project work including development of ranking criteria**
 - **Comprised of consultants & agency staff**

Bay Area IRWMP

- **Technical Coordinating Committee has decision-making authority**
 - 2 or 3 reps from each service function coordinating committee
- **4 service function coordinating committees**
 - Comprised of reps from agencies w/in region
 - Update goals, objectives, & project info w/in their functional areas
- **Decision-making structure is currently under review**

California Urban Water Conservation Council

- **Members divided into 3 groups**
 - **Group 1: Water Suppliers**
 - **Group 2: Advocacy Organizations**
 - **Group 3: Interested Parties**
- **To pass an action requires affirmative vote by majority of Group 1 & majority of Group 2**
- **Steering Committee serves as Board**
 - **Equal representation from Groups 1 & 2**
 - **Responsible for general management activities**

Santa Monica Bay Restoration Commission

- **Governing Board (20 & 15 non-voting) is decision-making group**
 - 9 elected from broad stakeholder body representing a balance of interests (cities, environmental groups, business/economic)
 - Remaining are reps from Fed, State, & local agencies
- **Technical Advisory Committee deals w/ technical & scientific interests**
 - Scientific & technical professionals appointed by Governing Board

Santa Ana Watershed Project Authority

- **Comprised of 5 largest agencies w/in Santa Ana River Watershed**
- **SAWPA Commission exercises power & authority**
 - **One Board Member or GM from each agency**
- **Technical Committee of GMs makes recommendations to Commission on all technical & financial issues**
 - **Comprised of GM from each agency**
- **Operates on an individual project basis**

Draft Project Prioritization Framework for the
Greater Los Angeles County IRWMP

Prioritization Framework

Objectives

- Tool to help identify the “best” projects in the Region and in each sub-region
- Maintain consistency across Region
- Allow sub-regions to emphasize their priorities

General Prioritization Approach

Regional Objectives

- Addresses multiple IRWMP objectives
- Contribute toward regional targets
- Encompass more than 1 sub-region
- Incorporate more than 1 entity

Best Project for the Region.

Helps with:

- Regional Solutions
- State Lobbying
- Regional Political Support

Same for all sub-regions

Sub-Regional Priorities

- Local preference for IRWMP objectives
- Critical Needs
- Disadvantaged Communities
- Other Factors

Best Project for the Sub-region.

Helps with:

- Local Political Support
- Local Decision-Making
- Local Funding Priority

Different for all sub-regions

Readiness to Proceed

- Technical Documentation
- Cost and Cost-Share
- CEQA
- Schedule
- Local Support

Best Project for Present Funding

Helps with:

- Increase Funding Opportunities
- Meet State Priorities

Same for all sub-regions

Project Examples

- **Project 1 – Large single-purpose water supply project**
 - Completed all design, permitting and environmental clearance and is ready for construction.
- **Project 2 – Moderate-sized recycled water project**
 - Benefit to a local disadvantaged community
 - Covers more than one sub-region or includes multiple partners.
 - Conceptual and preliminary plans have been completed while land acquisition, permitting and final design are in process.
- **Project 3 – Small open-space and recreation project**
 - Some habitat benefit but is not designed to enhance water quality or water supply.
 - Located only in one sub-region or only has one proponent,
 - Does not produce a benefit for a disadvantage community
 - Not considered a high profile or demonstration project
 - Most planning and design work has been completed but no information is available on final construction documents.
- **Project 4 – Multi-objective project water quality improvement project**
 - Also produces quantifiable benefits for water supply, habitat, open space and recreation and also replaces or refurbishes existing infrastructure.
 - High profile or demonstration project
 - Located in one sub-region or only includes one proponent
 - No information is available regarding planning, design, or permitting.

Table 4: Example of Regional Prioritization Evaluation and Scoring

Items		Screening and Scoring Methods			Information Not in Database	Project Database Information				Project Scoring			
ID		H/M/L or Y/N				Project ID				Project ID			
						1	2	3	4	1	2	3	4
A.1	Objectives	Degree of Benefit Scoring (Contributions to Planning Targets)											
		H (6 pts)	M (4 pts)	L (2 pts)									
A.1a1	Improve Water Supply - Total (AFY)	>1000	100-1000	<100		10,000	1,000	-	500	6	4	0	4
A.1b1	Improve Water Quality* – (MGD)	>10	1-10	<1		-	5	-	1.5	0	4	0	0*
A.1b2	Groundwater* (AFY)	>1000	100-1000	<100		-	-	-	1,500	0	0	0	6
A.1c	Enhance Habitat (AC)	>10	1-10	<1		-	-	0.1	10	0	0	2	4
A.1d1	Enhance Open Space, Recreation (AC)	>10	1-10	<1		-	-	0.5	5	0	0	2	4
Subtotal		Out of 24				Subtotal				6	8	4	18
A.2	Other Regional Priorities	Yes/No Scoring											
		Y = 5 pts											
A.2a	Multiple Sub-regions / Multiple Entities	Y/N				-	✓			-	5	-	-
A.2b	High Profile / Demonstration Project	Y/N			X	✓**			✓**	5	-	-	5
Subtotal		Out of 10				Subtotal				5	5	0	5
TOTAL		Out of 34				TOTAL				11	13	4	23

* Each project can be awarded points for either A.1b1 (Improve Water Quality) or A.1b2 (Groundwater), whichever is greater. For example, Project 4 has quantitative benefits for both criteria but is only awarded 6 points (not 6+4=10 pts)

** Subjective Assessment by Leadership

H/M/L High, medium, and low category, with associated points

Y/N Yes or no; associated points are all or nothing

Table 6: Example of Sub-Regional Prioritization Evaluation and Scoring

ID	Items	Screening and Scoring Methods		Information Not in Database	Project Database Information				Project Scoring			
		Yes/No Scoring			Project ID				Project ID			
		Checkbox Scoring (Qualitative)			1	2	3	4	1	2	3	4
B.1	Prioritized Objectives											
	<i>Sub-Regions Rank Set Objectives</i>		Rank (Wt.)									
B.1a	Improve Water Supply	Y/N	1 (8 pts)		✓	✓		✓	8	8	-	8
B.1b	Improve Water Quality	Y/N	2 (7 pts)			✓		✓	-	7	-	7
B.1c	Enhance Habitat	Y/N	3 (6 pts)				✓	✓	-	-	6	6
B.1d	Enhance Open Space, Recreation	Y/N	4 (5 pts)				✓	✓	-	-	5	5
B.1e	**Sustain Communities	Y/N	5 (4 pts)	X				✓	-	-	-	4
	Subtotal	Up to 30			Subtotal				8	15	11	30
B.2	Other Sub-Regional Priorities	Yes/No Scoring										
	<i>Sub-Regions Choose Priorities (max 5)</i>	Y = 4 pts										
B.2a	**Critical Needs	Y/N		X	✓			✓	4	-	-	4
B.2b	[EX] Water Conservation Project Bonus	Y/N					✓		-	-	4	-
B.2c	[EX] Wetland Project Bonus	Y/N					✓		-	-	4	-
B.2d	[EX] Small Project Bonus (< \$5M)	Y/N			\$100M	\$50M	\$1.5M	\$25M	-	-	4	-
B.2e	Disadvantaged Communities	Y/N				✓		✓	-	4	-	4
	Subtotal	Out of 20			Subtotal				4	4	12	8
	TOTAL	Out of 50			TOTAL				12	19	23	38

Notes:

- Ranking of project alternatives allows each sub-region to emphasize (weight) different types of projects that the sub-region prefers.
 - Points are awarded for each criterion based on the ranking assigned by the sub-region. The points range was set up so that the lowest priority objective would receive half points of the highest ranked objective.
 - Sub-regional priorities are up to five items selected by each sub-region to be evaluated on a yes/no basis.
- ** Criteria not currently included in Project Database.
 [EX] Example criteria are to be developed by each steering committee.
 Y/N Yes or no; associated points are all or nothing

Table 8: Example of Readiness to Proceed Prioritization Evaluation and Scoring

Items	Screening Method & Points Awarded				Information Not in Database	Project Database Information				Scoring				
	<i>High/Medium/Low Scoring</i>					Project ID				Project ID				
ID	Degree of Completeness					1	2	3	4	1	2	3	4	
C.1	Documentation Progress													
	H (6 pts)	M (3 pts)	L (0 pts)	Not Applicable **										
C.1a	Conceptual Plans	C	IP	NI	NA		C	C	IP	NI	6	6	3	0
C.1b	Land Acquisition	C	IP	NI	NA		C	IP	IP	NI	6	3	3	0
C.1c	Preliminary Plans	C	IP	NI	NA		C	C	IP	NI	6	6	3	0
C.1d	Permits	C	IP	NI	NA		C	IP	IP	NI	6	3	3	0
C.1e	Construction Drawings	C	IP	NI	NA		C	IP	NI	NI	6	3	0	0
Subtotal		Out of 30					Subtotal				30	21	12	0
C.2	Cost, Schedule, & Support													
	Defined Benchmarks													
	H (5 pts)	M (3 pts)	L (1 pt)	Not Applicable**										
C.2a	Project Feasibility (0-3 Documents)	3+	2	1	NA		3	2	2	1	5	3	3	1
C.2b	Cost-Share	>60%	40-60%	<40%	NA	X	80%	50%	30%	50%	5	3	3	3
C.2c	Schedule – Construction Start	2008-10	2011-12	2013+	NA		2009	2011	2010	2013	5	3	5	1
C.2d	Local Support	H	M	L	NA	X	L	H	M	H	1	5	3	5
Subtotal		Out of 20					Subtotal				16	14	14	10
TOTAL		Out of 50					TOTAL				46	35	26	10

Notes:
 ** Criteria not currently included in Project Database.
 C Complete
 H/M/L High, medium, and low category, with associated points
 IP In Process
 NI Not Initiated
 NA Not Applicable

Table 9: Summary Scores for Each Project

Project ID	Regional Benefit		Sub-Regional Priorities		Readiness to Proceed	
	Score	Rank	Score	Rank	Score	Rank
Project 1	11	3	12	4	46	1
Project 2	13	2	19	3	35	2
Project 3	4	4	23	2	26	3
Project 4	23	1	38	1	10	4

Options to identify top 30 projects per sub-region:

- A. Add Regional Benefit and Sub-Regional Priority Scores and rank.
- B. Identify projects in top 25% of both Regional Benefit and Sub-Regional Priorities. Add those scores then rank.
- C. Use Readiness-to-Proceed score/rank when necessary (e.g. for grant applications or tie-breaker)

Next Steps

April	<ul style="list-style-type: none">▪ Finalize draft framework; incorporate comments from steering committees▪ Proponents update project information (by April 30)
May	<ul style="list-style-type: none">▪ LC adopts prioritization framework for use▪ Steering committees rank regional objectives and identify other sub-regional priorities▪ Consultants screen projects and present rankings to steering committees▪ Steering committees review results and identify top 30 projects per sub-region▪ Steering committees identify 10 projects for integration exercise
June	<ul style="list-style-type: none">▪ Consultant team produces recommendations to enhance 10 project identified for integration exercise.▪ Consultant team re-ranks top 30 projects▪ Steering committees review and adopt prioritized project list.

Future Considerations

- If/when is framework “tweaked”?
- How will results from end of June be used?
- Are modifications to database needed?
- New call for projects/project updates? If so, when?
- At what points do we re-rank projects again? (e.g. for Prop. 84?)

Overview of May USGR&RH Project Workshops

Future Agenda Items/ Other Items

Schedule

Project Prioritization Meetings

- Thursday, May 24th, 9 am to 5 pm
- Tuesday, May 29th, 9 am to 5 pm

June Steering Committee Meeting

- Monday, June 18th, 1:30 pm to 3:30 pm
(tentative)